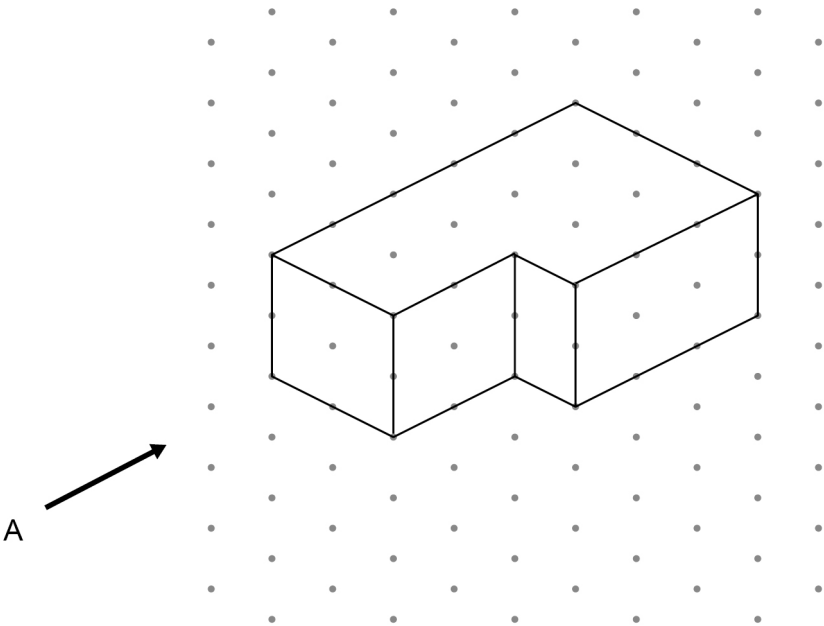
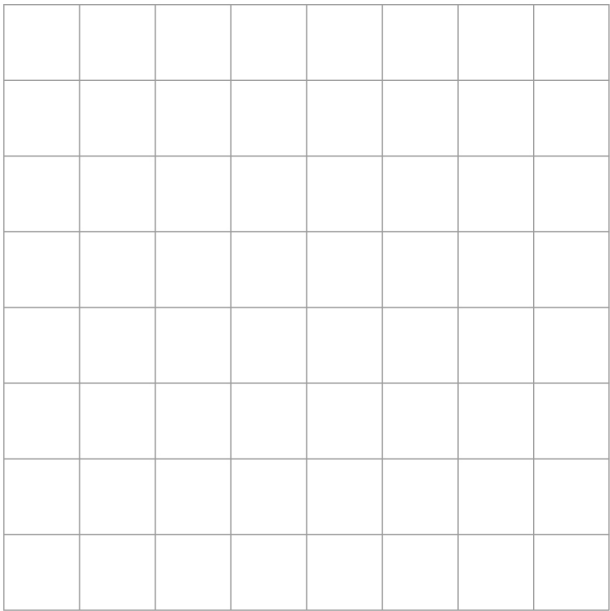


1 A solid shape is drawn on isometric paper.



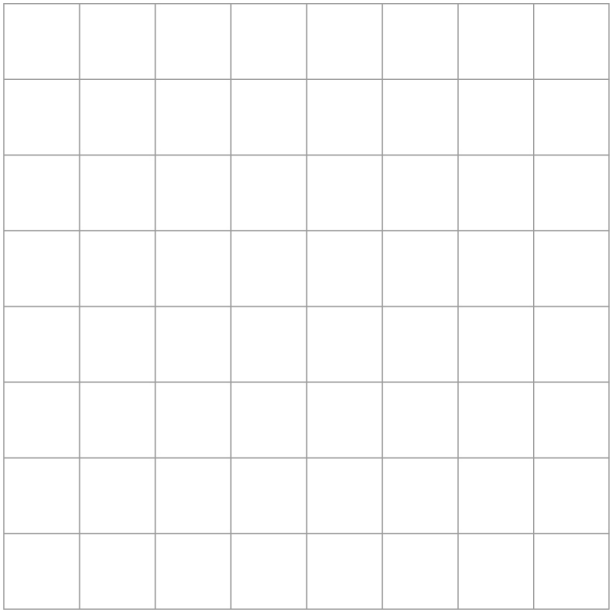
1 (a) On the centimetre grid, draw the elevation of the shape from A.

[1 mark]



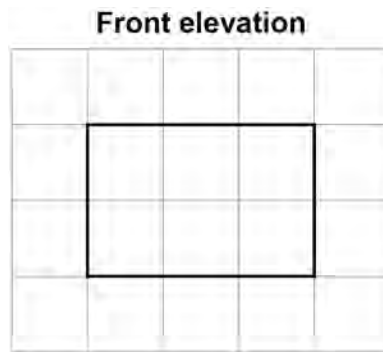
1 (b) On the centimetre grid, draw a plan of the shape.

[1 mark]



2

The front elevation of a cuboid is shown on this centimetre grid.



The volume of the cuboid is 42 cm^3

Draw the **side elevation** on this centimetre grid.

[2 marks]

